

PRODUCT NOTIFICATION

RELEASED DATE: 03/24/98
PRODUCTS AFFECTED: EXP-CFA-Q-71
EXP-CFA-Q-72
PRODUCT IDENTIFICATION: CompactFlash™ Adapter
PURPOSE OF NOTIFICATION: Release Notes
BRIEF DESCRIPTION:

The CompactFlash Adapter provides a low cost, rugged, and flexible means to add a socket for CompactFlash removable-media solid state disk (SSD) cards to systems based on Ampro embedded-PCs. CompactFlash cards have a system interface that is electrically and functionally identical to that of normal (magnetic media) IDE hard disk drives, with the result that they are fully supported by all operating systems and application programs.

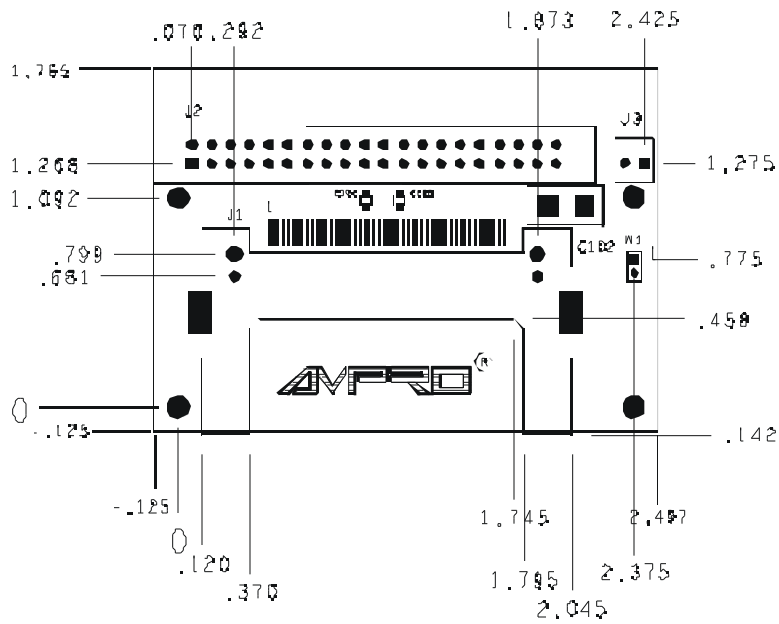
Installation

1. Verify that no power is running to the intended system.
2. Connect IDE cable from the system to CompactFlash Adapter (CFA). For the 40-Pin CFA, also connect the power cable from the power supply (with the power shut OFF) to connector J3.
3. Configure CFA as a Master (W1 ON) or Slave (W1 OFF) drive.
4. Install the CompactFlash Card into the socket.
5. Boot the system and enter the CMOS setup:
 - If the CFA is configured as a Master Drive, set AT HDC Disk 1 to "AUTO" in the Standard CMOS Setup page.
 - If the CFA is configured as a Slave Drive, set AT HDC Disk 2 to "AUTO" in the Standard CMOS Setup page.
6. Save the configuration and reboot the system.
7. The CFA should be accessible as C: for the Master Drive configuration and D: for the Slave Drive configuration. Note: Some CompactFlash Card manufacturers may require the memory to be partitioned using the fdisk command.
8. If you require the CompactFlash Card to be bootable:
 - a) copy the operating system files onto the CompactFlash Card by using the sys command (i.e. sys c:).
 - b) Reboot the system. Enter the CMOS Setup and make the appropriate changes to set the Compact Flash drive as the default boot device.

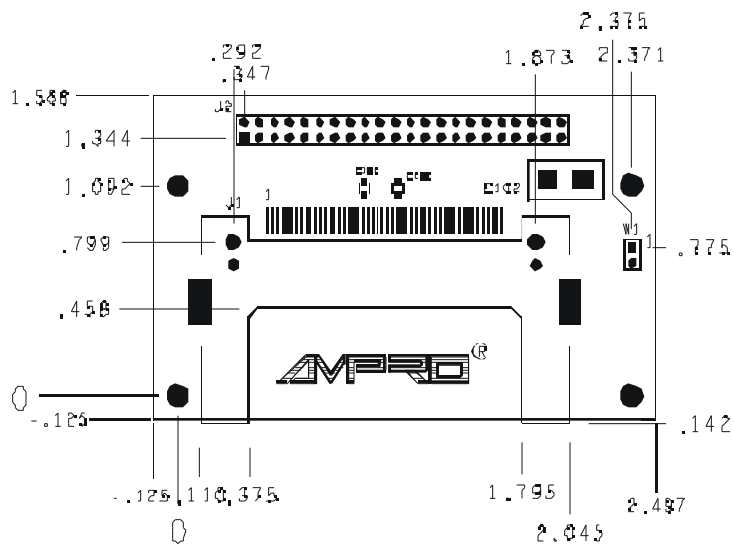
If you have technical questions, please contact *Ampro Applications Engineering*:
Tel: 1-800-966-5200 or 408-360-0200
Fax: 408-360-0222 email: support@ampro.com URL: www.ampro.com

European customers, please contact the *Ampro European Logistics Center (AELC)*
Tel: 011 31 10 292 7548 Fax: 011 31 10 479 6887
email: ge@pc104.nl URL: pc104.nl

CompactFlash™ Adapter Mechanical Dimensions



40 PIN ADAPTER



44 PIN ADAPTER